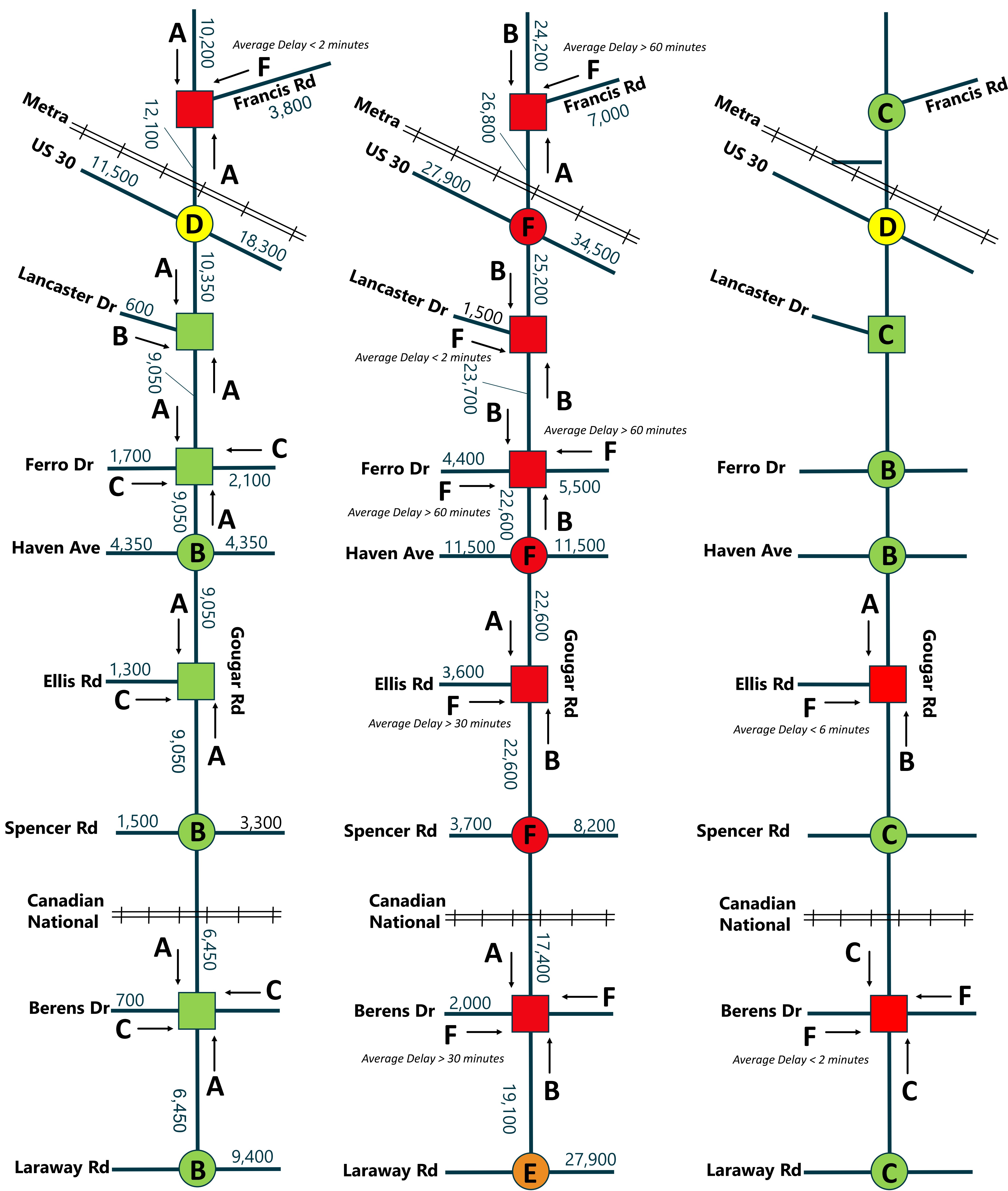


# AVERAGE DAILY TRAFFIC (ADT) AND LEVEL OF SERVICE (LOS)

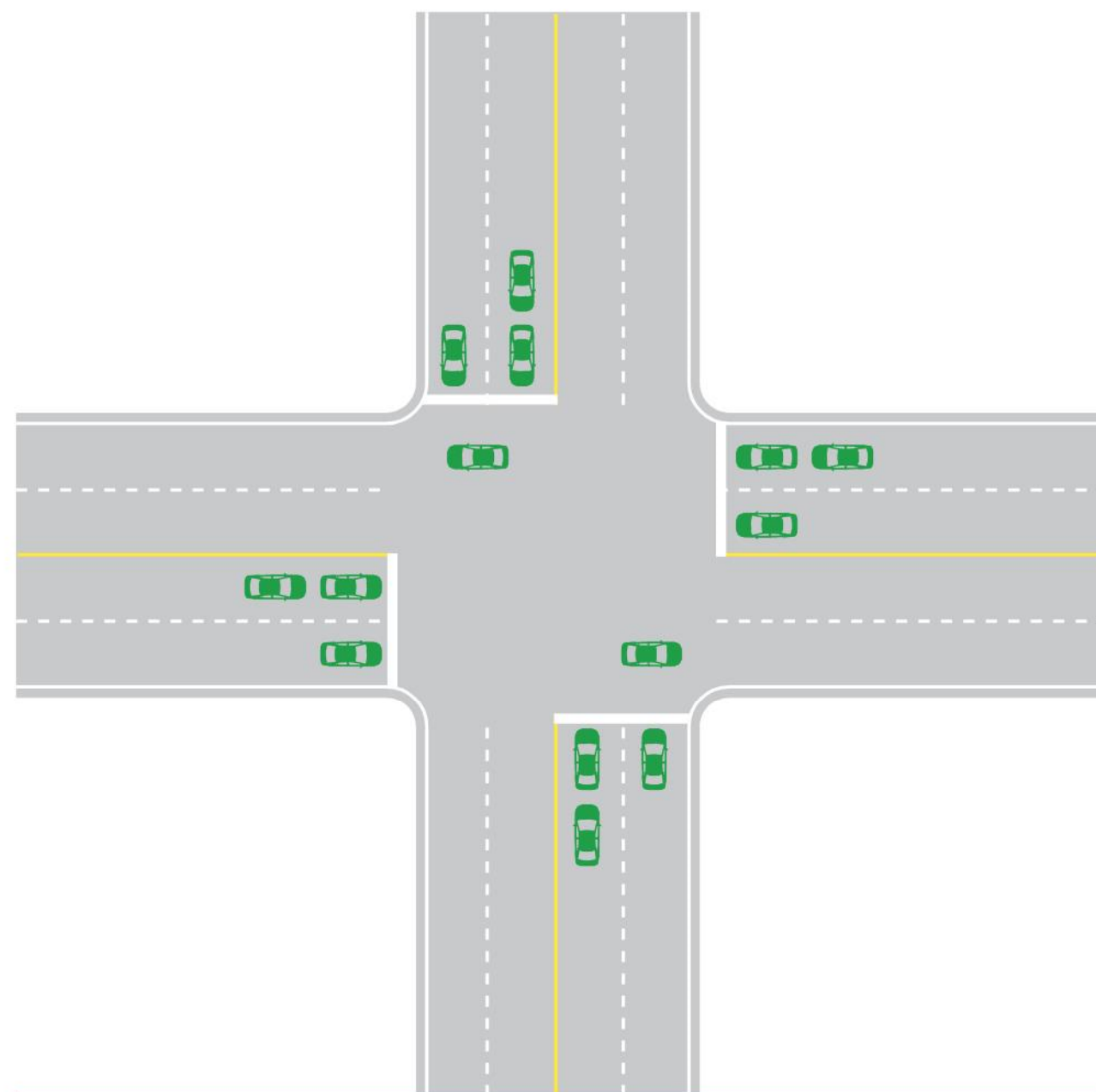
EXISTING

2050 NO BUILD

2050 BUILD

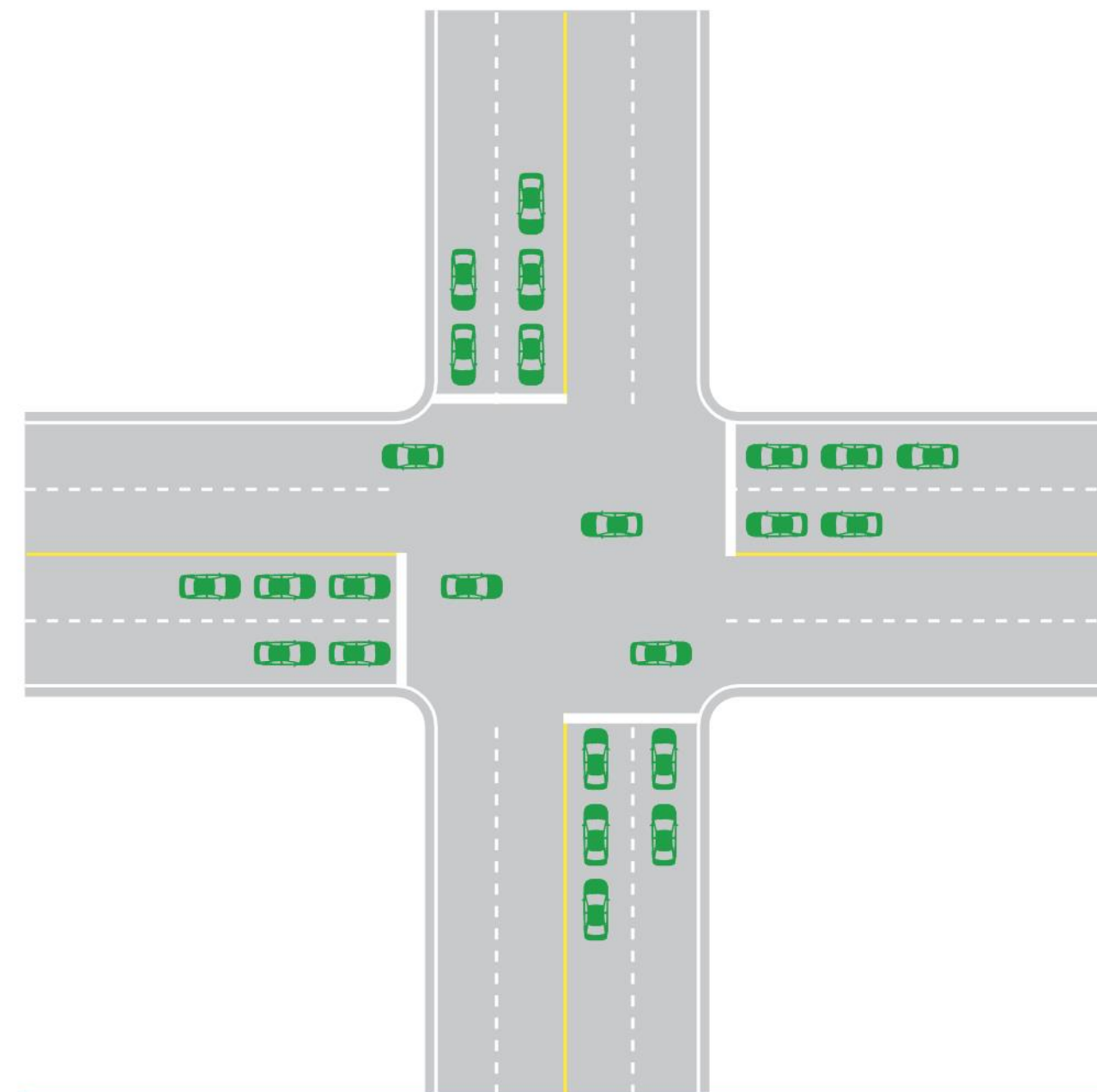


# LEVEL OF SERVICE (LOS) DEFINITION



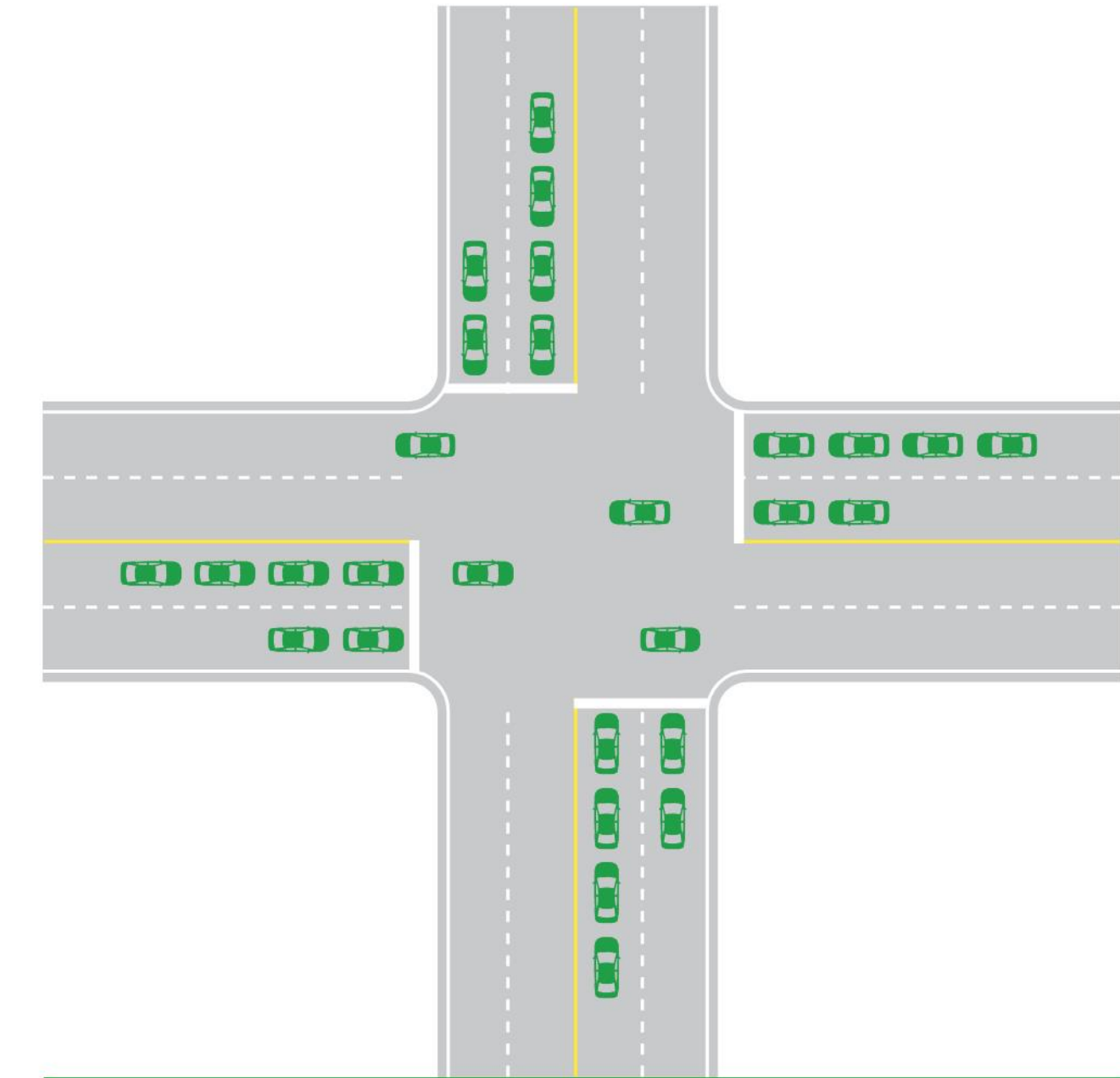
## LOS A

Intersection approaches appear quite open and all movements are easily made. Average vehicle delays are **less than 10 seconds**.



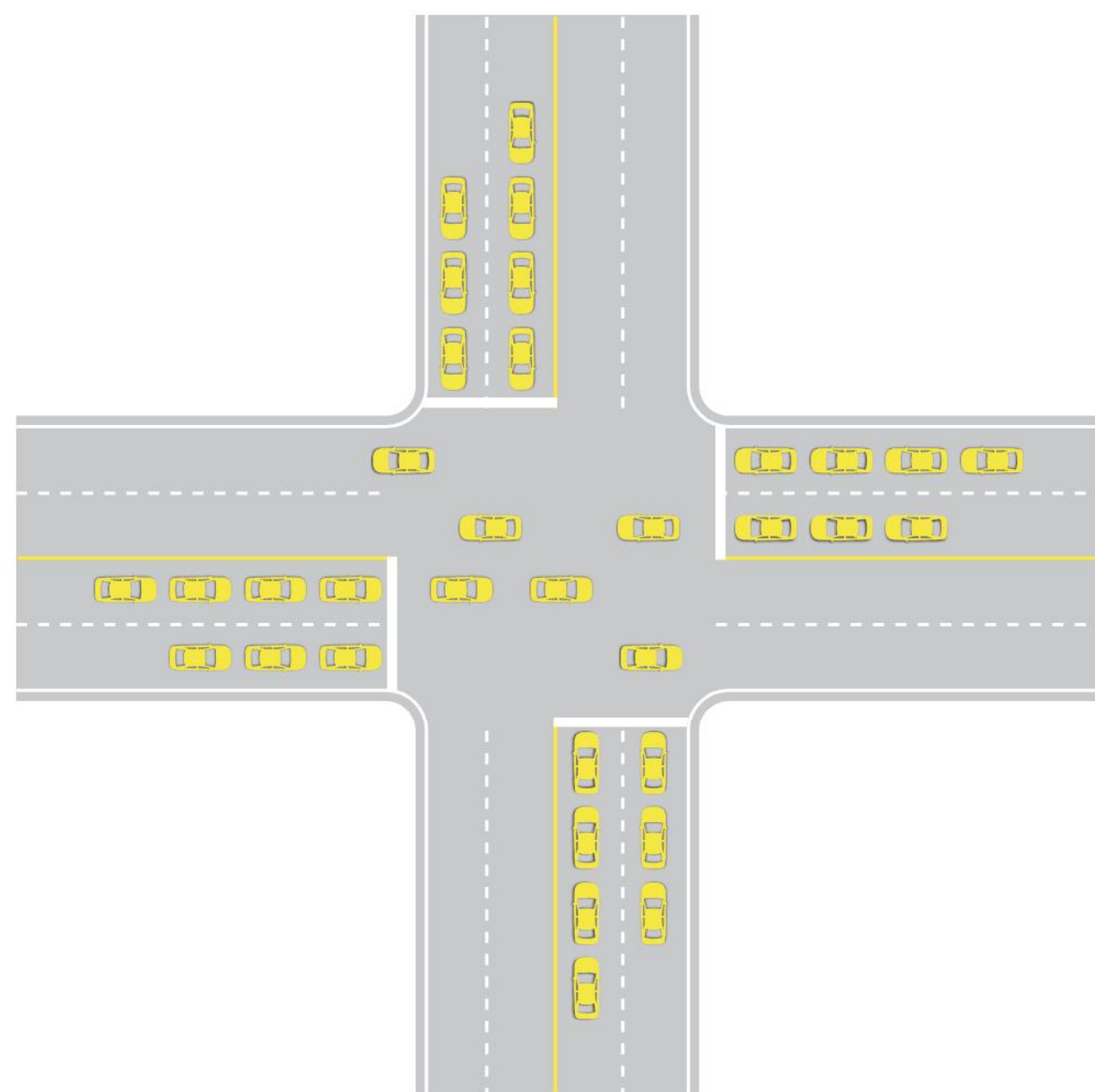
## LOS B

Stable operation. Average vehicle delays are **10 to 20 seconds**.



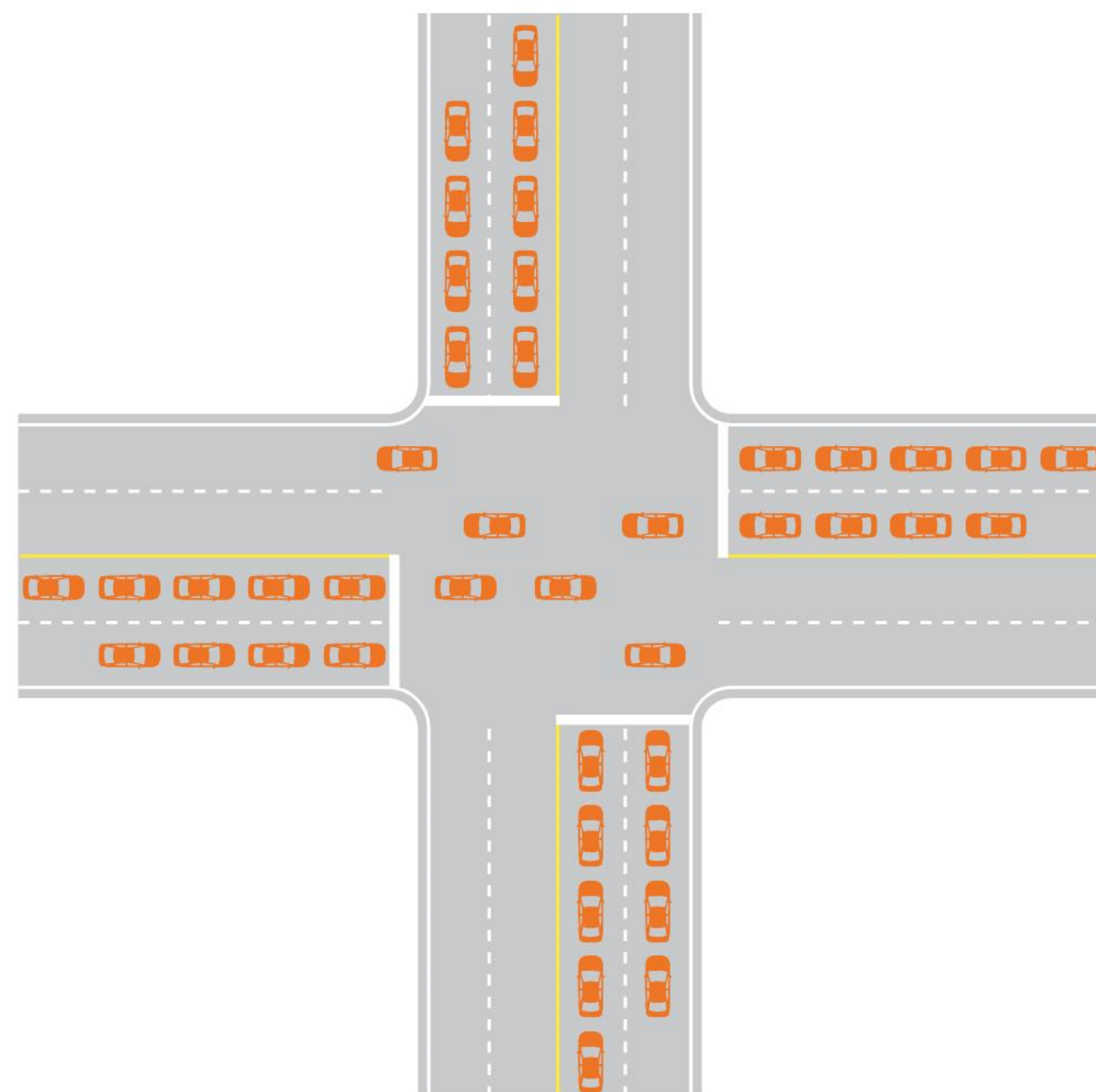
## LOS C

Periodic backups where most drivers begin to feel somewhat restricted. Average vehicle delays are **20 to 35 seconds**.



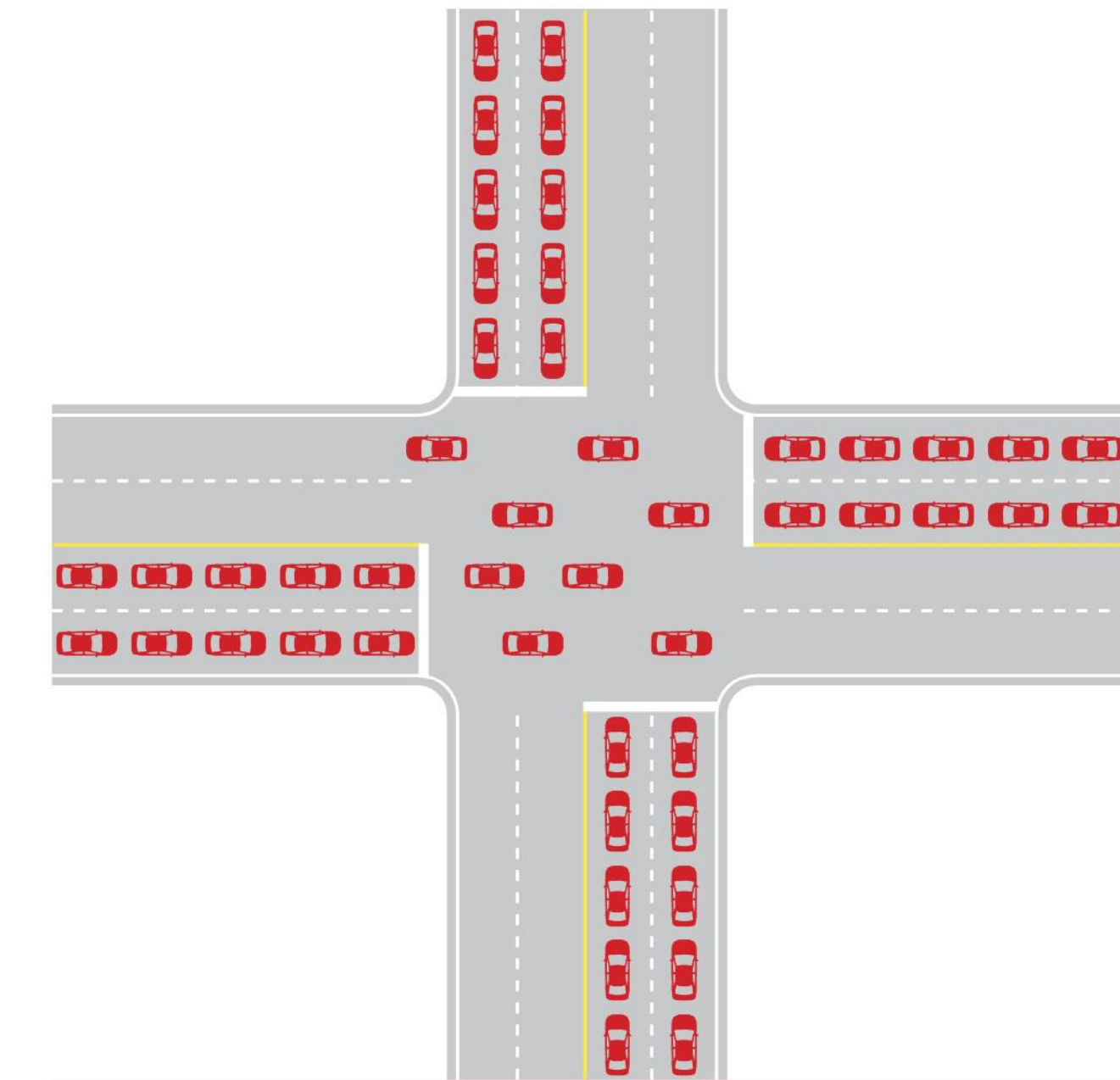
## LOS D

Delays to approaching vehicles may be substantial during short periods, but excessive backups are negligible. Average vehicle delays are **35 to 55 seconds**.



## LOS E

Maximum capacity of the intersection. Average vehicle delays are **55 to 80 seconds**.



## LOS F

Jammed conditions where the intersection is over capacity. Average delays **exceed 80 seconds**.

