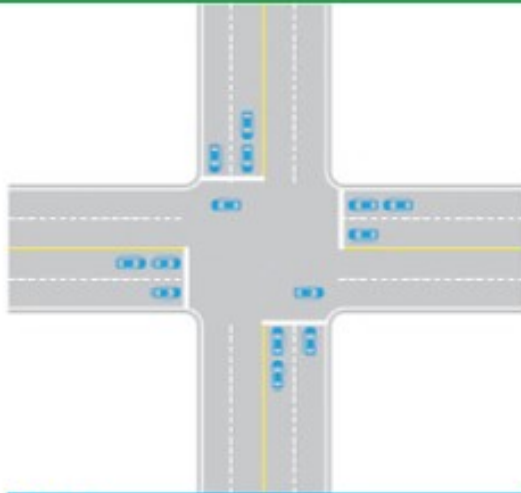
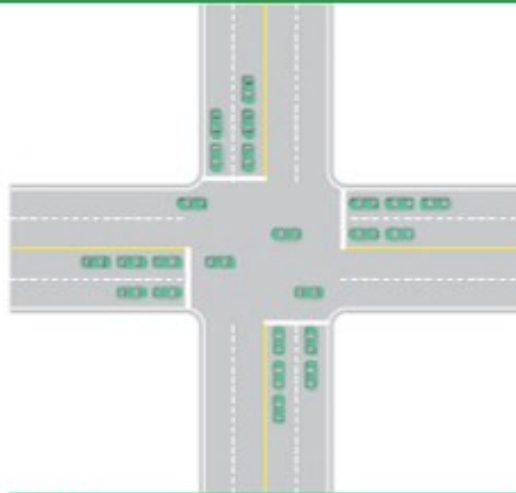


Definition: Level of Service



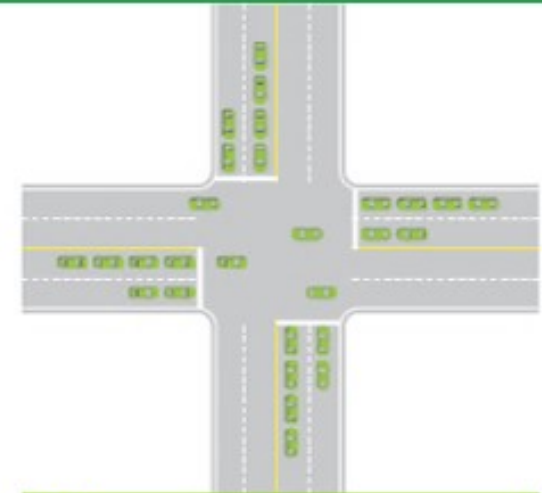
LOS A

Intersection approaches appear quite open and all movements are easily made. Average vehicle delays are **less than 10 seconds**.



LOS B

Stable operation. Average vehicle delays are **10 to 20 seconds**.



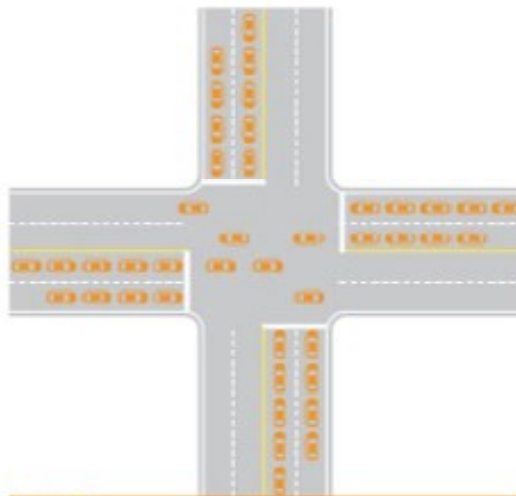
LOS C

Periodic backups where most drivers begin to feel somewhat restricted. Average vehicle delays are **20 to 35 seconds**.



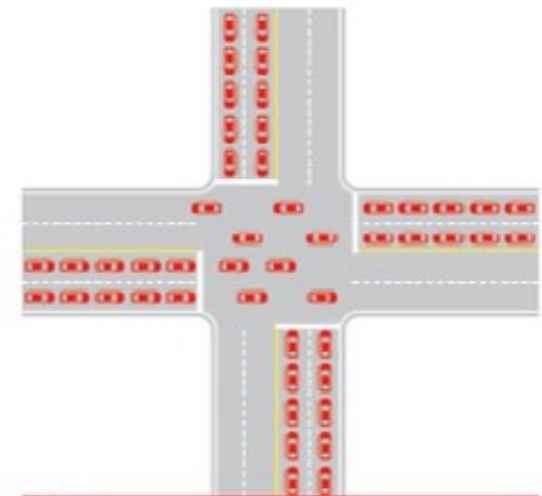
LOS D

Delays to approaching vehicles may be substantial during short periods, but excessive backups are negligible. Average vehicle delays are **35 to 55 seconds**.



LOS E

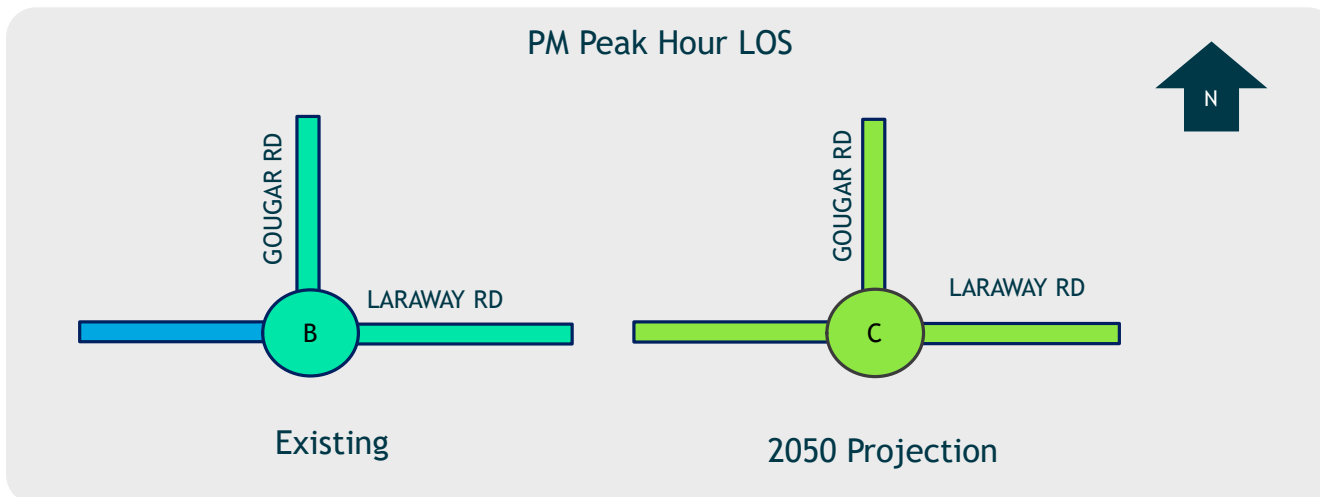
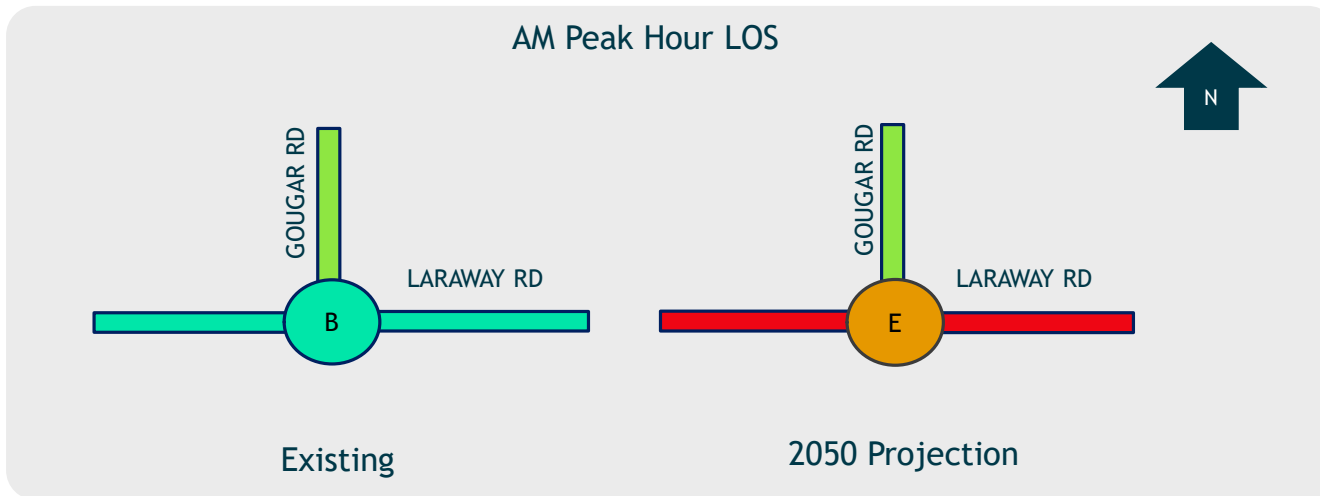
Maximum capacity of the intersection. Average vehicle delays are **55 to 80 seconds**.



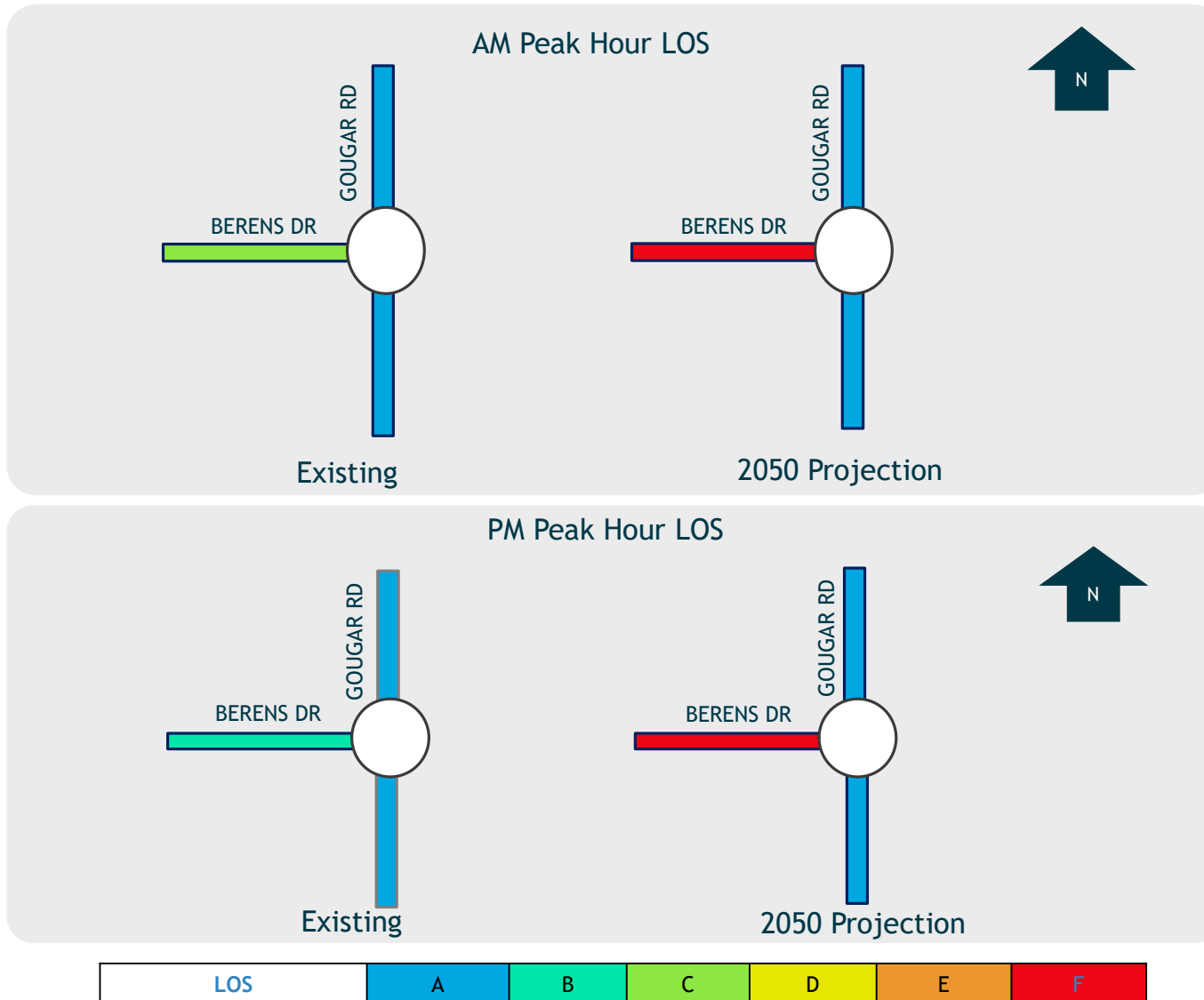
LOS F

Jammed conditions where the intersection is over capacity. Average delays **exceed 80 seconds**.

Gougar Road at Laraway Road: TRAFFIC FLOW

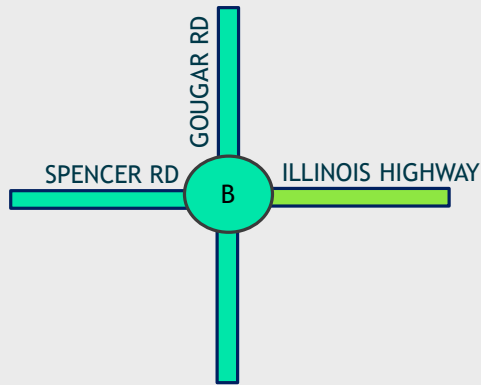


Gougar Road at Berens Drive: TRAFFIC FLOW

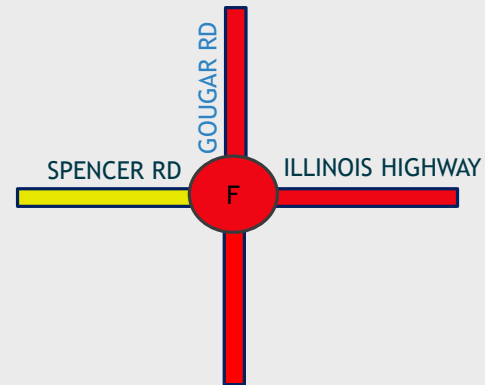


Gougar Road at Spencer Road: TRAFFIC FLOW

AM Peak Hour LOS



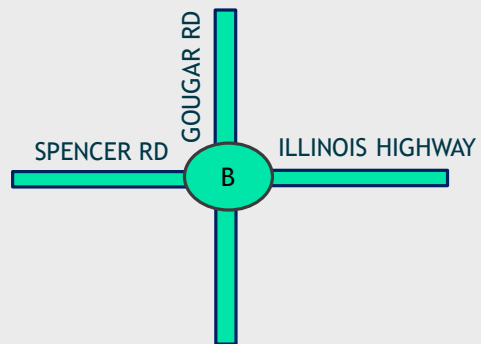
Existing



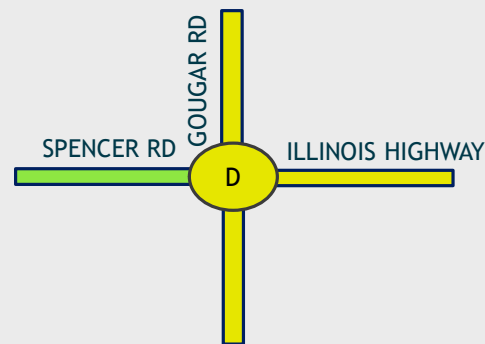
2050 Projection



PM Peak Hour LOS



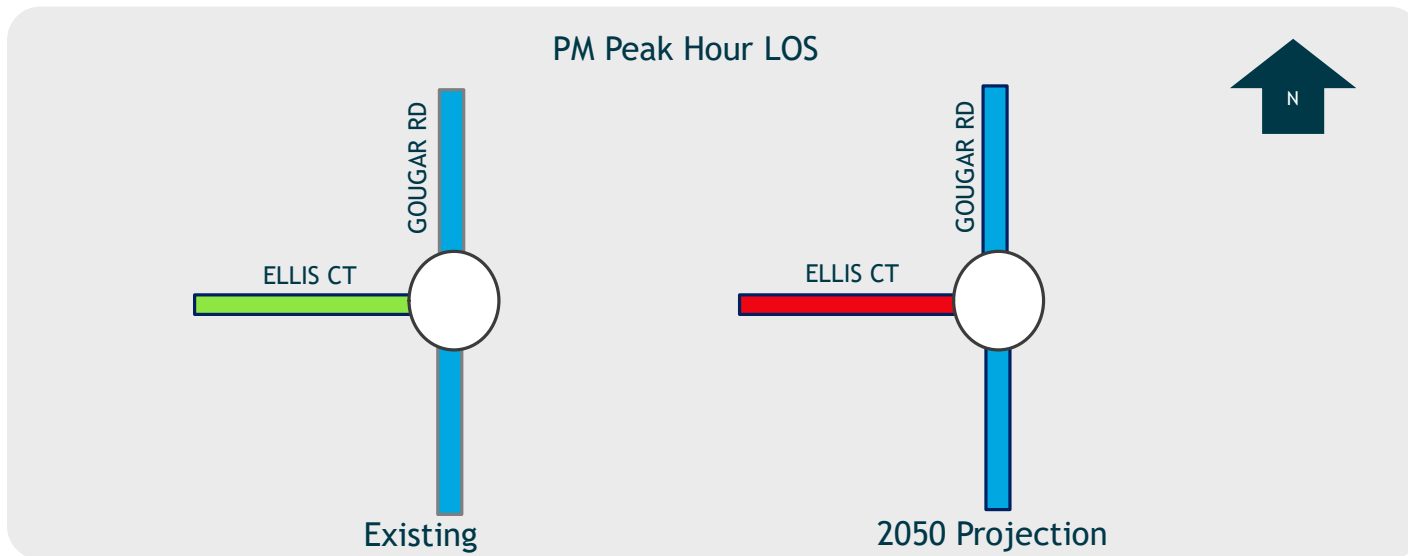
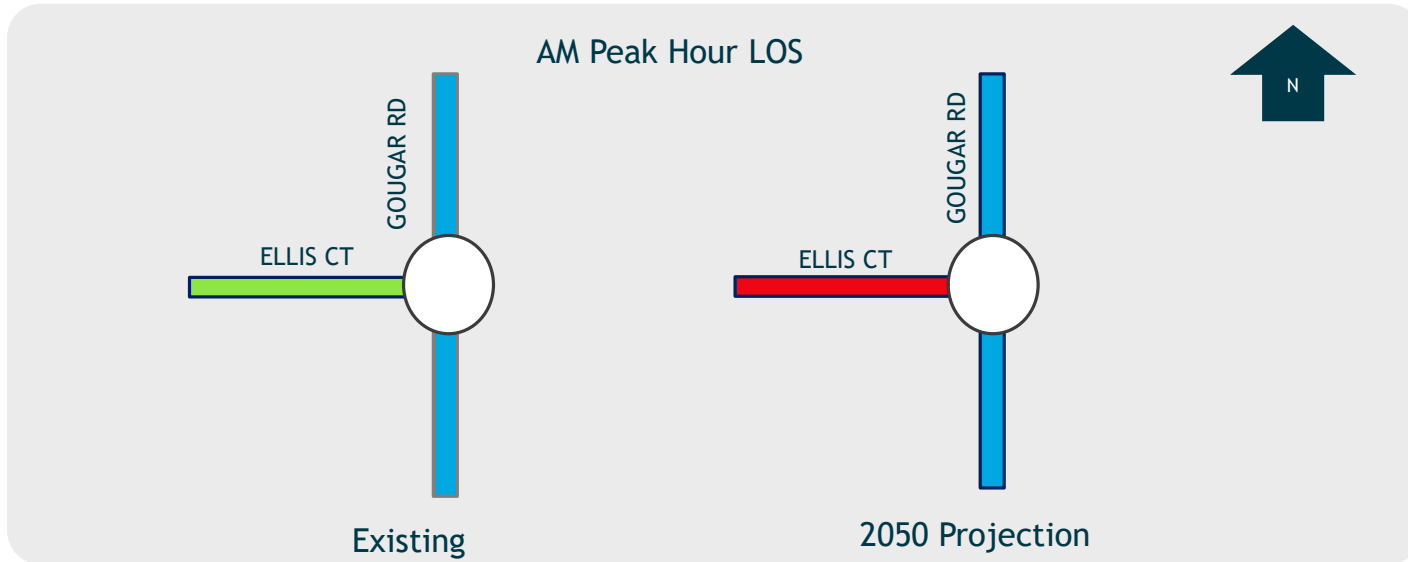
Existing



2050 Projection

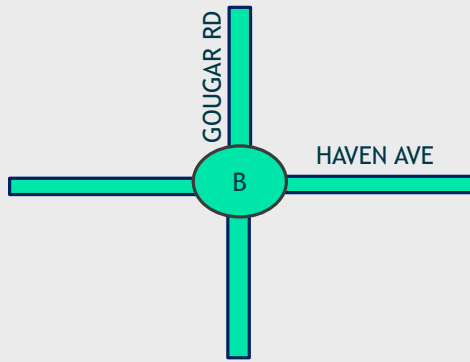


Gougar Road at Ellis Court: TRAFFIC FLOW

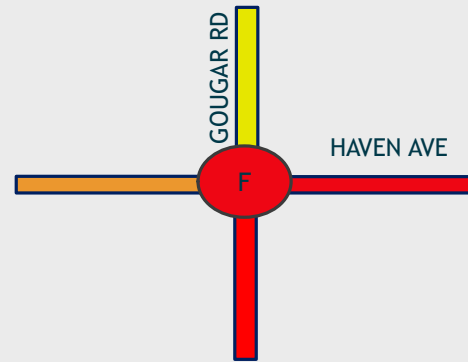


Gougar Road at Haven Avenue: TRAFFIC FLOW

AM Peak Hour LOS



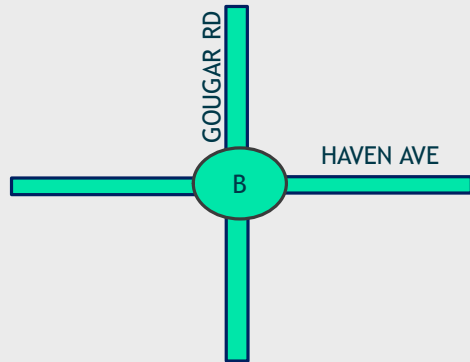
Existing



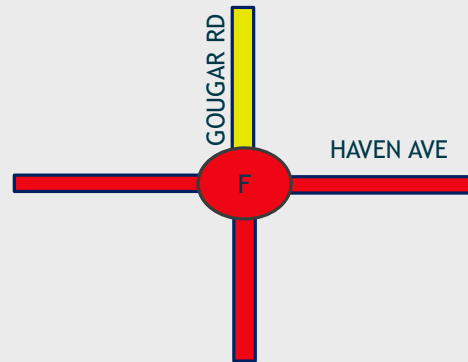
2050 Projection



PM Peak Hour LOS



Existing

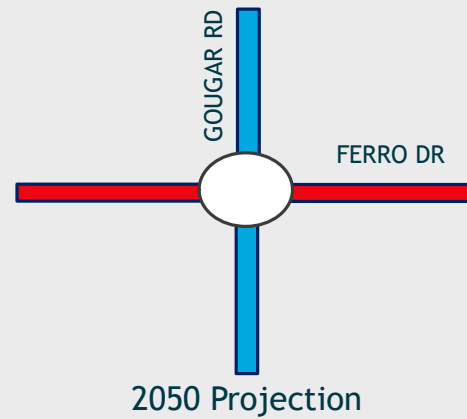
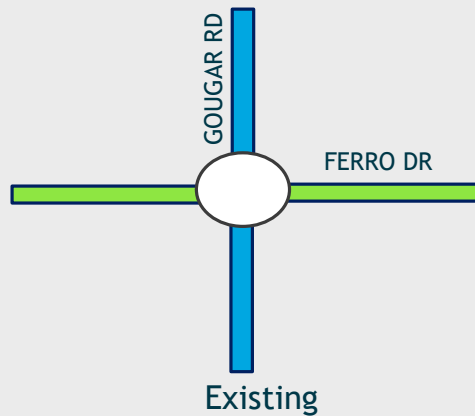


2050 Projection

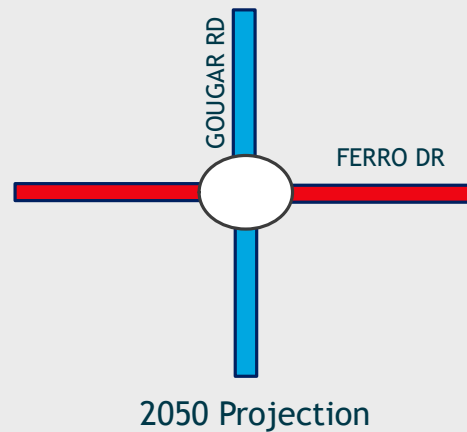
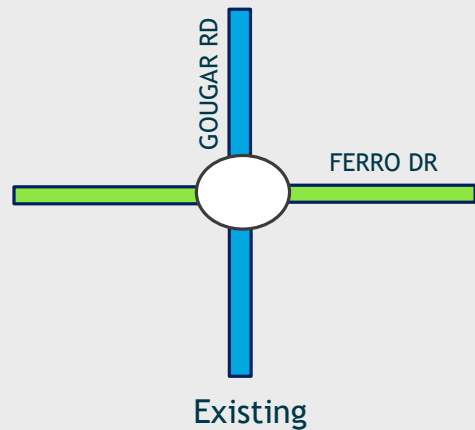


Gougar Road at Ferro Drive: TRAFFIC FLOW

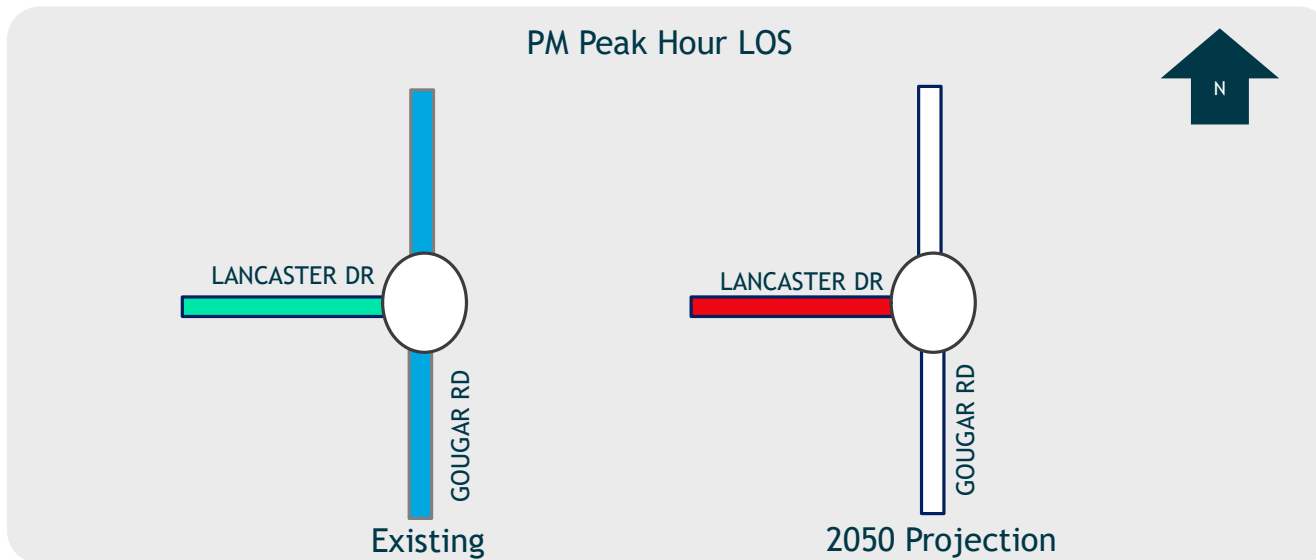
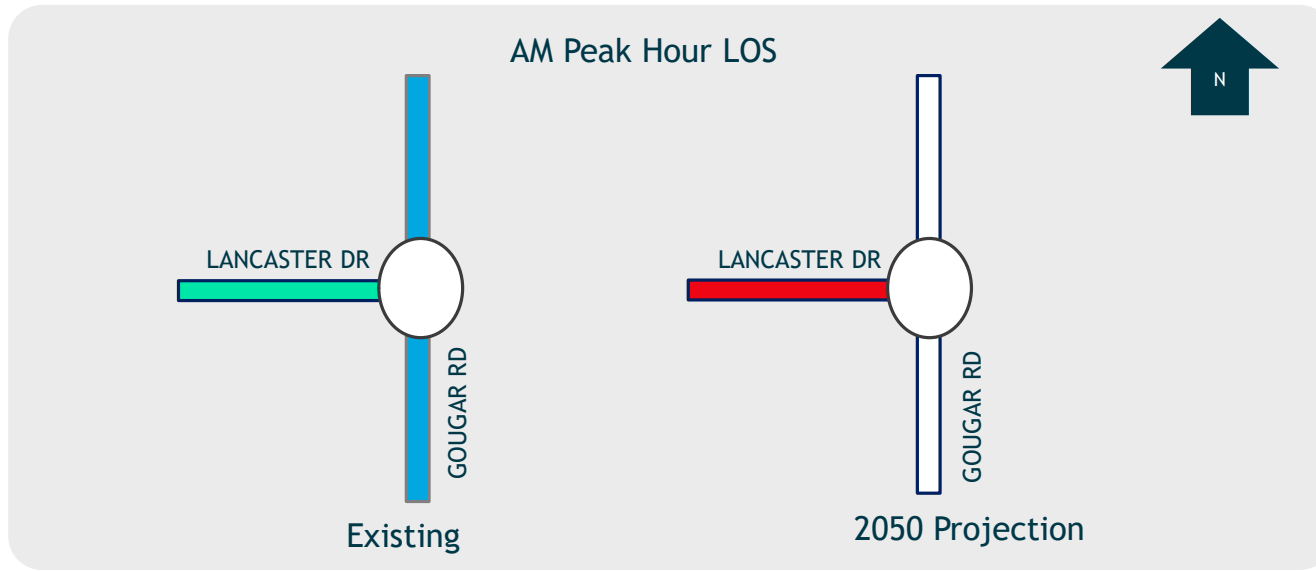
AM Peak Hour LOS



PM Peak Hour LOS

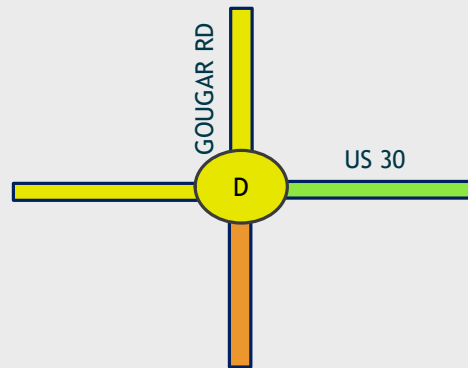


Gougar Road at Lancaster Drive: TRAFFIC FLOW

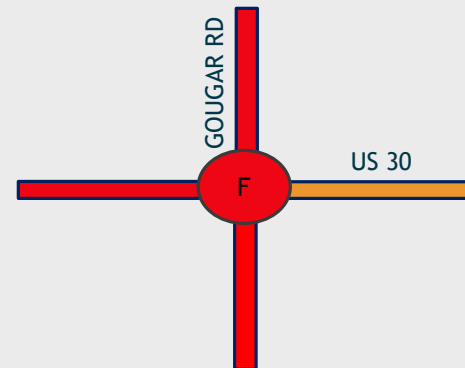


Gougar Road at US Route 30: TRAFFIC FLOW

AM Peak Hour LOS



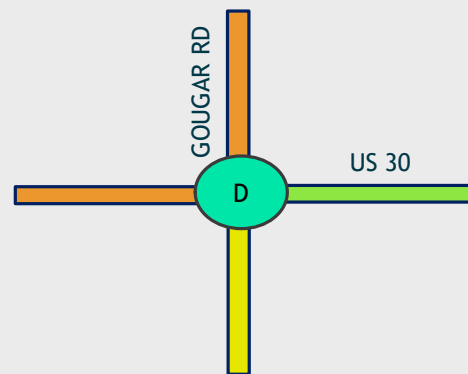
Existing



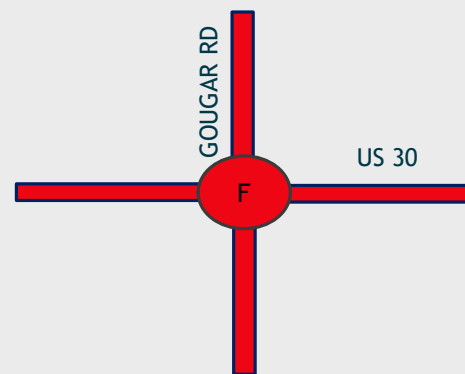
2050 Projection



PM Peak Hour LOS



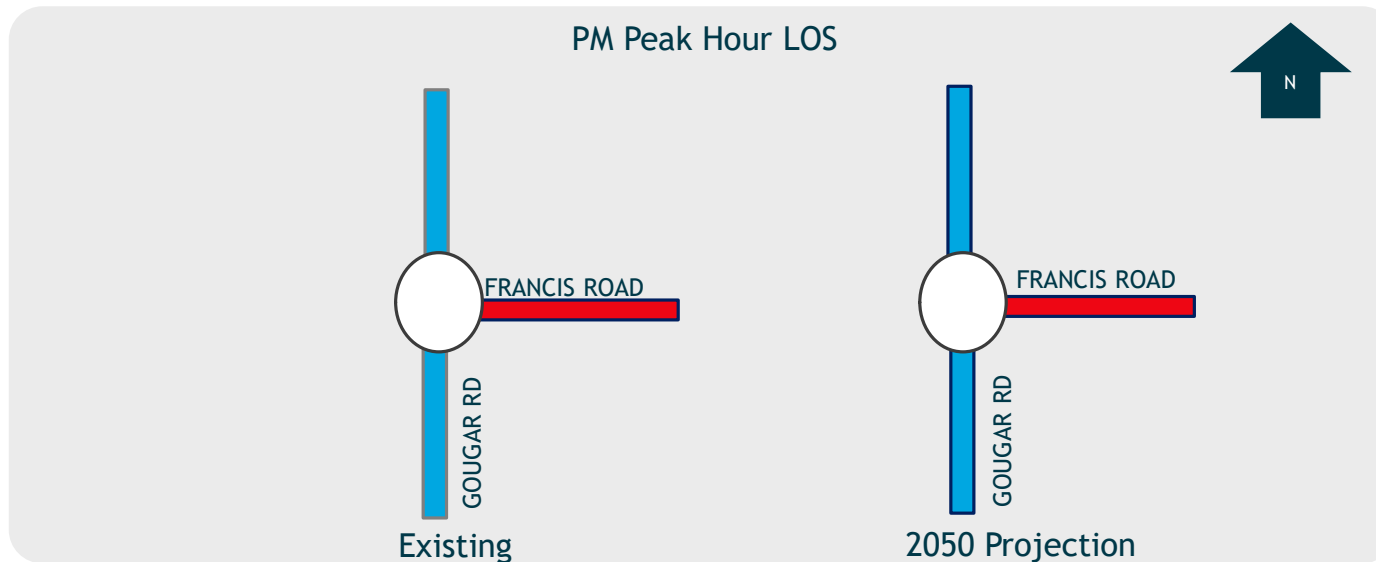
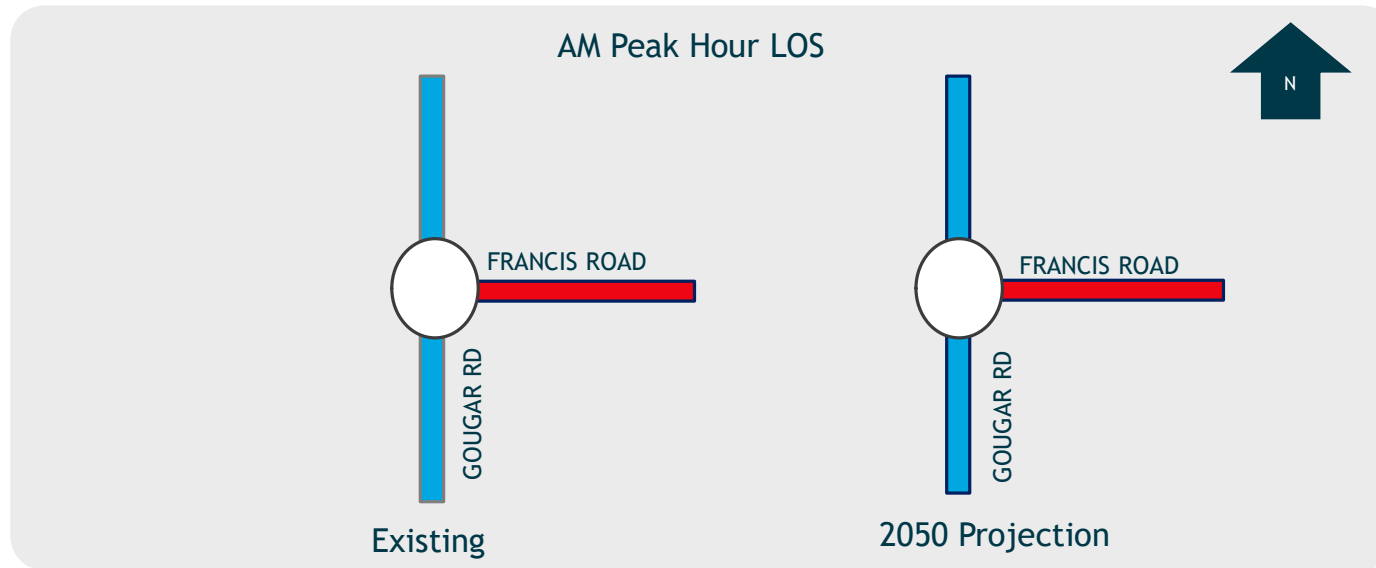
Existing



2050 Projection



Gougar Road at Francis Road: TRAFFIC FLOW



LOS	A	B	C	D	E	F
-----	---	---	---	---	---	---